

Drinkware



PROMOTIONAL DRINKWARE IDEA BOOK



Tumblers

24 Oz. Domed Rhinestone Emblazoned Tumbler

Promote your brand or logo with a 24 oz. rhinestone emblazoned tumbler. The imprint area is a 2.36" circle. These tumblers are hand wash only, and each is individually boxed and includes a clear straw.

Custom color combinations are also available. 2.36" D
Colors: Pink, Black, White, Blue, Red, Orange, Green



12	24	48	72	144	288
52.00	50.00	48.00	46.00	44.00	42.00

BTL102

20 Oz. Vacuum Tumbler

Go anywhere with this 20 oz. sleek vacuum insulated tumbler that will keep your drinks hot or cold for up to six hours. The double-wall construction creates insulation of hot or cold liquids with the copper lining. The tumbler also includes a spill-resistant slide action lid with a rubber gasket. It also meets FDA requirements and is BPA-free. Hand washing is recommended. 6.75" H x 3.35" D

Colors: Black, Blue, Red, Copper, Silver, Titanium Gray, White



HOT OR COLD
UP TO 6 HOURS

24	48	96	240	504	1008
12.99	11.99	11.75	11.50	10.99	9.99



20 Oz. ASOBU® Aqualina

The ASOBU® Aqualina was created exclusively for the person who searches for that statement piece. Enjoy hot and cold beverages at the flip of a lid. Simply remove the straw, close the lid, and switch to a hot drink. Made with double-walled, vacuum insulated stainless steel that ensures beverages remain hot or cold for hours. It also fits effortlessly into a vehicle cup holder.

Colors: Black, White, Red, Mint, Pink, Blue

48	144	288
24.13	22.22	20.328



18 Oz. Dax Series Tumbler

This 18 oz. Dax Series Tumbler is made from double-walled vacuum insulated stainless steel. Features a push on/off button, easy slide open/close lid, and a cork-colored silicone bottom to prevent slipping. 6.9" H

Colors: Black, White, Blue, Tan, Red, Silver

72	144	288	576	1008	1980
12.94	12.54	12.14	11.74	11.34	10.94



20 Oz. Stainless Tervis Tumbler

Tervis is the original double-wall insulated tumbler your customers ask for by name. Tervis now offers the increased level of functionality of stainless steel with a limited lifetime guarantee. Put your trust in the brand that has kept hot drinks hot and cold drinks cold while reducing condensation since 1946. 6.75" H x 3.50" W

Colors: Stainless Steel Silver

25	300	1000
23.35	21.68	20.01

BTL203



20 Oz. Antimicrobial Stainless Steel Tumbler

This 20 oz. tumbler features an antimicrobial additive that neutralizes over 99% of active bacteria and prevents the growth and spread of bacteria on the lid and exterior. It also includes a spill-resistant slide action lid with a rubber gasket! It is FDA compliant and BPA-free. Hand wash only. 6.5" H x 3.375" W
Colors: Black, White

25	50	150	250	500	1000
9.99	8.99	8.50	7.99	7.49	6.99

DT27



30 Oz. Insulated Vacuum Tumbler

This 30 oz. tumbler keeps your cold drinks cool and hot drinks warm through a sturdy construction of double-wall, vacuum insulated stainless steel. Laser imprinted logos and messages will stand out beautifully on this item that is generously sized to keep you hydrated while still fitting in most standard cupholders. The lid includes a slide function to allow easy access to your drink. 4.0" W x 8.0" H x 4.0" D
Colors: Black, Blue, Copper, GunMetal, Red, Silver, White

48	96	144	288	576
17.59	16.71	16.01	15.33	14.48

APG161

16 Oz. Double-Wall Acrylic Tumblers

These 16 oz. colored double-wall acrylic tumblers are perfect for customizing with your logo! They are double-wall insulated to keep your drinks at the right temperature, and they come with one matching straw. 2.75" D x 6.25" H

Colors: Aqua Blue, Blue, Charcoal Gray, Clear, Fuchsia Pink, Green, Lime Green, Orange, Purple, Red



12	50	100	500	1000	2500
12.02	7.39	5.91	4.42	4.25	3.69

DT28

20 Oz. Color Splash Economy Stainless Steel Tumbler

The economy 20 oz. tumbler features a stainless steel, double-wall outer shell with a plastic liner and a non-slip base. The snap-on clear lid with slide closure sports a rubber seal for a secure fit. 3.5" W x 6.75" H x 3.5" D

Colors: Black/Blue, Black/Red, Silver, Silver/Blue, Silver/Red, White, White/Gray



48	96	192	384	528
7.60	7.29	7.02	6.55	6.29



16 Oz. Insulated Stainless Steel Travel Mugs

These BPA-free 16 oz. personalized stainless steel travel mugs feature stainless steel silver outer walls, an insulated inner plastic liner, a smooth curved body for an easy grip, several color accents, and spill-proof plastic lids with slide lock. A great addition to coffee shops and stores everywhere. 2.50" W

Colors: Silver/Black, Silver/Blue, Silver/Green, Silver/Lime Green, Silver/Orange, Silver/Pink, Silver/Purple, Silver/Red, Silver/Yellow

12	50	100	500	1000	2500
10.49	7.04	5.63	5.10	4.81	3.99



16 Oz. Elemental® Powder Coating Series Ceramic Lid Tumbler

The Elemental® Tumbler is the only insulated stainless steel tumbler with a ceramic lid instead of a plastic lid. The patented ceramic lid helps you enjoy that at-home coffee or tea experience even on the go! It is constructed with triple-wall copper insulation to keep your beverages hot up to 6 hours or cold up to 18 hours. 16 oz. 3" D x 5.75" H

Colors: Matte Black, Matte White, Graphite Gray, Robin's Egg Blue, Matte Rose Pink, Gloss Rose Pink, Forest Green, Red, Navy Blue

24	72	144	480
28.99	27.99	27.49	26.99



16 Oz. Ribbed Stainless Steel Tumbler

This 16 oz. stainless steel tumbler features a plastic liner, ringed slip-proof grip, and screw-on lid. These tumblers are a brilliant way to get your company's name in front of your customers for innumerable impressions as a convenient promotional gift. 3.13" D x 7.38" H

Colors: Black, Red

48	100	200	300	500	1000
5.65	4.933	4.55	4.383	4.25	4.10

SPTUMBLER



Custom Rhinestone Emblazoned Tumbler

Promote your brand or logo with a custom emblazoned rhinestone 20 oz. tumbler. Available in your choice of acrylic or glass rhinestones with a glitter background! Each tumbler is individually boxed and includes a straw. Hand wash only.

Colors: White, Black, Pink, Purple, Green, Red, Yellow

200	500	1000	1500	2500	5000
40.00	36.00	34.00	32.00	30.00	28.00

SSJACKSON20



20 Oz. VisionSteel Jackson Tumbler

This tumbler has you covered inside and out! With an appealing, powder-coated finish and double-wall, vacuum-insulated stainless steel, it will preserve the temperature of your hot and cold beverages for many hours. The screen may be printed 1-2 sides or printed full-color digital on one side only. It comes with a clear, push-in, thumb-slide lid and fits most standard cup holders. Hand wash only. 7" H x 3.375" W

Colors: Matte Black, Blue, Lime Green, Red, White, Gray

36	72	144	288	576	1224
13.99	13.49	12.99	12.49	11.99	10.99

28 Oz. Shaker Bottle

This BPA-free, plastic fitness bottle includes a plastic shaker ball along with a 7-day pillbox to store vitamins or pills. This leak-proof tumbler features embossed measurement markings on the side so you can keep track of your water intake! Imprint your company name and logo on the side to promote healthcare groups, fitness centers, hospitals, marathons, and more! 7.5" H x 3.5" D

Colors: Clear/Black

100	250	500	1000
5.50	5.25	5.00	4.75



20 Oz. Skinny Stainless Steel Tumbler

Promote your business among business associates, customers, and employees with this 20 oz. stainless steel skinny tumbler. Manufactured from food-grade stainless steel, these personalized tumblers include a clear lid that retains the drink temperatures. Customize them with your brand logos, slogans, and promotional messages, which can be printed in full colors on both front and back. 3" D x 8" H

Colors: Various, Full

5	25	100	500	2500	10000
39.00	24.06	19.20	18.18	17.30	11.92



Bottles



BTL400

17 Oz. Matte Finish Stainless Steel Bottle

Keep your drinks at the perfect temperature with this handy 17 oz. matte finish Insulated bottle! It features double-wall stainless steel with vacuum insulation and a copper lining that keeps drinks hot for 12 hours or cold for 48 hours. Please Note: Bottle capacity is 16 oz. when filled with liquid when the cap is affixed. 10.25" H x 2.9" D

Colors: Black, Royal Blue, Gray, Lime, White, Teal, Red



25	50	100	250	500
15.50	13.65	11.85	11.25	9.99

AP-BO205-US-STOCK

17 Oz. Matte Stainless Steel Bottle

This 17 oz. swig stainless steel bottle features a screw-on, spill-resistant lid, and full matte powder coating. The bottle has a wide mouth opening and double-wall construction for hot and cold liquids insulation. It also has a vacuum-sealed design with copper lining and keeps drinks cold up to 24 hours and hot up to 12 hours. 2.75" D x 9.75" H

Colors: Black, Blue, White



25	50	100	200	300	500
11.883	10.183	9.40	8.85	8.583	8.483

AT603



22 Oz. Aluminum Sports Water Bottle With Carabiner

This sports bottle is perfect for all your adventures! It is made from aluminum, has a black twist-on lid with a carabiner, and features a 2.5" x 3" silk-screened imprint area. Choose from or combine eight classic color options and add your logo!

Colors: Silver, Blue, Red, Green, Black, White, Pink, Yellow

100	250	500	1000
2.70	2.65	2.60	2.55

BTL17



Triple Banger Bottle Opener

Opening bottles has never been so easy! This 3-in-1 bottle opener is sonic welded and features an anti-microbial plastic body. It is perfect for opening plastic and glass bottles as well as pop top cans. 1.65" W x 4.50" H x 0.40" D

Colors: Opaque Black, Blue, Hot Pink, Neon Green, Neon Yellow, Red, White

150	250	500	1000
1.99	1.95	1.90	1.85

20 Oz. Sport Iconic Stainless Steel Water Bottle

The 20 oz. Iconic Sport Water Bottle can help you stay hydrated for hours! Featuring a flip-open sports lid that includes a straw, an adjustable silicone strap, and a silicone bottom - it's perfect for sports activities, adventure, or your daily commute! BPA-free and keeps drinks cold for up to 24 hours and hot for up to 12 hours. 2.75" D x 9.7" H

Colors: Matte Black, Matte White, Matte Graphite Gray, Matte Navy Blue, Matte Robin's Egg Blue, Matte Rose Pink, Teakwood Brown, White Marble, Brushed Steel



25	75	150	500
29.99	28.99	28.49	27.99

AT675

16 Oz. Stainless Steel Vacuum Insulated Thermal Bottle

Your customers will love this 16 oz. stainless steel thermal bottle! Vacuum insulated to keep your drinks at the perfect temperature for hours. Features a tight screw-on cap, a large imprint size, and each bottle is gift-boxed for easy giving! 10" H x 2.5" D

Colors: Blue, Red, Matte White, Matte Black, Silver, Rainbow, Camouflage



72	144	288	500	1008
6.75	6.65	6.55	6.45	6.35



32 Oz. PolarFlask Polar Camel Water Bottle

Get your promotional efforts or special events in full throttle with this high-quality water bottle! It keeps water or other beverages ice cold for all-day refreshment. Features a spill-proof, screw-on lid with an easy flip-top, soft rubber finger hold, raised ridges for easy opening and closing, and a rigid, removable straw for easy cleaning. Permanent laser engraved imprint or a full-color imprint available. Hand wash recommended. 10 5/16" H x 3 11/16" D

Colors: Black, Red, Royal Blue, Pink, Teal, Light Blue, Light Purple, Purple, Dark Gray, Navy Blue, Orange, Maroon, White, Green, Coral, Yellow, Black/Silver

12	24	60	120	240	480
26.00	25.00	24.00	23.00	22.00	21.00



20 Oz. Elemental® Iconic Sport Camo Stainless Steel Water Bottle

The new 20 oz. Elemental® Iconic Insulated Water Bottle is the last water bottle you will need! Attach it to your purse or bag to make transportation a breeze. The internal strainer is perfect for loose tea leaves or drinks that need shaking, like protein powders. The durable finish and double-wall insulation will keep your coffee hot up and down the mountain, and your water chilled all day long. 2.75" D x 9.7" H

Colors: Black Camo Soft Touch Coating

25	75	150	500
34.99	33.99	33.49	32.99



14 Oz. Asobu® Orb Water Bottle

The Asobu® Orb Bottle is made of double-wall, vacuum-insulated copper lined 18/8 stainless steel, so it will keep your drink hot for up to 12 hours and cold up to 24 hours. The ergonomic, easy-grip shape makes it an ideal travel companion.

Colors: Blue, Silver, Black, White, Yellow, Pastel

72	144	288
26.059	24.783	23.496



33 Oz. Asobu® Dog Bowl Bottle

The Asobu® Dog bowl water bottle is made of 100% BPA-free, double-wall vacuum-insulated copper and stainless steel. The easy-grip handle makes it convenient to carry even on long walks with your dog. It is equipped with a detachable stainless steel and plastic bowl that discreetly twists off the base of the bottle when it's time to re-hydrate your dog. The anti-slip base makes it very easy for your pets to drink from, and the large capacity ensures your dog is sufficiently hydrated.

Colors: Black, Burgundy Red, Blue, White, Pink

50	100	500
30.69	29.513	28.336

Custom Shape Bottle Opener Key Chain

Elevate your next promotional campaign with these custom-made hand polished bottle openers! This fully customizable bottle opener is made of zinc and comes with a jump ring. It is perfect for summer parties, festivals, colleges, BBQs, and part of a complete brand promotion strategy. 2 1/4" L x 1 1/2" W

Colors: Antique Silver, Antique Brass, Antique Copper, Shiny Gold, Shiny Silver, Shiny Copper, Black Plated, Eco-Friendly Green



250	500	1000	2500
3.49	3.19	3.02	2.88

SJU3

33 Oz. Asobu® Mini Jug

Totally fun, totally necessary, and definitely Insta worthy! "Trek" around your urban jungle with this mini jug. Double-walled, vacuum-insulated stainless steel ensures that beverages remain fresh for hours. The ergonomic handle complements this outdoor-inspired jug. Fresh. Fun. Fashionable. Color your world today with the mini jug!

Colors: Black, Mint, Pink, Red, Birch Wood



48	144	288
32.769	30.866	30.70



17 Oz. Iridescent Bottle

These 17 oz. vacuum insulated bottles feature a screw-on, spill-resistant lid, and double-walled stainless steel construction that will keep drinks hot for 12 hours or cold for 24 hours. Imprint your company name and logo to promote employee recognition, holiday gifts, travel agencies, hospitality groups, pride awareness, and more. 10" H x 2 5/16" D

Colors: Iridescent Various

50	100	250	500
12.00	11.75	11.50	11.25

SOL7L

Vapur® Solids Folding Anti-Bottle

The .7 Liter Vapur® Solids Series features your choice of many bold colors. The unique design makes this water bottle reusable, foldable, attachable, freezable, sustainable, and convenient. Unlike traditional rigid bottles, it lies flat when empty and can be folded and stored. Additional features include a carrying clip built into the cap, BPA-free, and dishwasher safe materials. 11" H x 3.5" W x 2.5" L
Colors: Marigold, Magenta, Blue, Black, Pink, Red, White



100
9.95

250
9.50

TWB23

1 Gallon Asobu® Jumbo Jug

Hydrate with nature's miracle: fresh cold water! This one-gallon jumbo jug includes an ergonomic handle and straw. Top with ice and sip from the silicone straw. Its lightweight, shock-resistant construction ensures that the jumbo jug is perfect for outdoor and indoor use.

Colors: Black, Blue, Mint, Purple



48
34.199

144
32.296

288
30.393

Mugs



18800

18 Oz. Acadia Collection Stainless Steel Mug

This mug features double-wall stainless steel construction with a contrasting speckled finish. It comes with a push-on open/close sliding lid and fits most car cup holders. 7" H

Colors: White/Black, Seafoam Green/Black, Blue/Black, Gray/Black, Black, Olive Green/Black, Red/Black, Orange/Black, Sand/Black

72	144	288	576	1008	1980
12.30	11.90	11.50	11.10	10.70	10.30



3352

17 Oz. Cimarron Collection Ceramic Mug

The large 17 oz. Cimarron Collection Ceramic Mug features a smooth, matte finish in four cool earth tone colors and a large contemporary handle. 3.58" H

Colors: Olive, Black, Plum, Gray

72	144	288	576	1008	1980
8.24	7.84	7.59	7.34	7.09	6.84





20 Oz. Darien Collection Ceramic Mug

This large capacity mug features a matte, speckled retro finish and a large, sturdy handle with a black bottom accent. 4.18" H

Colors: Olive, White, Blue, Gray

72	144	288	576	1008	1980
8.24	7.84	7.59	7.34	7.09	6.84



11 Oz. Full-Color White Ceramic Mug

Made in the USA, this traditional white 11 oz. ceramic glossy mug can be customized with a full-color logo or artwork with ink! Create brand awareness and promote businesses or events with any full-color logo or artwork without breaking your promotional budget!

3.75" H x 3.23" D

Colors: White

12	24	36	72	288	576
5.83	5.40	4.99	4.50	4.42	4.25

20 Oz. ASOBU® Twin Pack

Adapt to any situation with the twin pack! A unique travel combination for hot and cold beverages. Enjoy your cold beverage from the insulated stainless steel bottle while sipping your favorite hot drink from the mug. The bottle slides neatly into the mug for easy transport. Perfect for the office, school, and outdoors.

Colors: Black, White, Mint, White, Pink



48	144	288
33.528	31.625	29.733

AP-TU302-US-STOCK

14 Oz. Double-Walled Camping Mug

Grab this premium-looking 14 oz. mug with a stainless steel outer liner and plastic inner liner. It comes with a snap-on, spill-resistant thumb-slide lid, double-wall construction for insulation of hot or cold liquids, and a cork-look rubberized base to protect surfaces from heat and scratches. 3.45" D x 4.6" H

Colors: Black, White, Blue, Red



48	100	200	300	500	1000
7.917	7.117	6.70	6.517	6.317	6.20

KM8408

28 Oz. Perka Winston Stainless Steel Travel Mug



The Perka Winston Travel Mug is just what you need for your road trip, morning commute, outdoor event, and more! This mug has a 28 oz. capacity and features double-wall stainless steel construction with vacuum insulation that keeps your drink hot for 12 hours and cold for 24 hours. Its ergonomic handle is comfortable to hold and easy to carry. The tapered shape of the Winston and its high handle placement makes it perfect for a standard car cup holder. 4 1/2" W x 8 1/2" H x 3 1/2" D

Colors: Black, Light Blue, Blue, Red, White

48	96	240	480
19.49	18.99	18.49	17.99

SM35



28 Oz. ASOBU® 360 Mug

This mug fits all standard vehicle cup holders and has an ergonomic easy-grip stainless steel handle. The splashproof and adjustable 360 lid gives you instant, easy access with a ceramic-coated interior for a clean, fresh taste - beverages remain hot for up to 12 hours and cold for 24 hours. The 360 Mug is ready when you are.

Colors: Black, White, Teal

48	144	288
28.974	27.071	25.168

20 Oz. ASOBU® Tower Mug

The sturdy tower mug stands high above the crowd! The ergonomic handle and easy access lid make this a must-have. Vacuum-insulated stainless steel and ceramic interior ensures beverages remain hot for hours! It fits all vehicle cup holders, making it ideal for all on-the-go activities.

Colors: Black, White, Red, Mint, Pink



48	144	288
23.265	21.373	19.47

12 Oz. Cork Base Ceramic Mug

This unique and stylish ceramic mug is made with an insulated cork bottom and comes with a push-on, splash proof lid with a gasket and slide action closure. The cork bottom prevents scratching and staining on wood desks or glass tables. The large handle provides a reliable, comfortable grip. Perfect for hot coffee, tea, water and other beverages for any home or office.

Colors: Black, Blue, Red



72	144	288	576
6.26	6.05	5.95	5.84



Cups

MS7005

16 Oz. Mixing Glass

This classic mixing glass has been a standard for successful and start-up restaurants, bars, breweries, businesses and more. The simple and iconic smooth tapered shape provides an imprint area that is ideal for showing off various logos and artwork. Use this glass to serve beverages of any kind, from popular mixed drinks, craft beers, soda, cold brew, seltzers to iced tea, lemonade, and water. 3.25" L x 3.25" W x 5.875" H

Colors: Clear



72	144	288	576	1008	2016
3.34	3.00	2.87	2.67	2.50	2.34

KIT803

Retro Lunchbox With Double 10 Oz. Stemless Wine Glass

This retro lunchbox bottle combo features a PVC double vacuum formed insert that snugly fits two 10 oz. stemless wine glasses. This sleek look will leave your audience praising your brand for days to come. 8" W x 6" H x 4" D

Colors: Black, White, Silver, Royal Blue, Red, Matte Black, Blue, Copper, Rose Gold, Titanium Gray



24	48	144	288	504
35.60	33.62	31.50	30.45	29.40

TG812



12 Oz. Insulated Paper Cups

Refresh a current marketing campaign with a promotional product ideal for virtually any business, fundraiser, or special event! This 12 oz. insulated paper cup conveniently holds hot or cold beverages making it a great promotion for your business at concert venues, outdoor festivals, and coffee shops. Proudly made in the USA and BPA-free, these cups can help build brand awareness with each sip! Lids are available at an additional cost.

Colors: White

100	250	500	1000	2500	5000
1.20	0.88	0.72	0.65	0.62	0.55

TGJF-W



17 Oz. Java Flex To-Go Cup

The perfect on-the-go cup and lid combo! The 17 oz. Java Flex is great for hot and cold beverages, is top-rack dishwasher safe, recyclable, and BPA-free.

Colors: White

50	100	250	500	1000	2500
2.90	2.60	2.24	1.98	1.88	1.79

15 Oz. Stemless Wine Glass

Add a touch of class to your next promotional event when you give this high-quality gift, sized perfectly for all dinner occasions and receptions. Serve a bottle of red or white wine in this customizable wine glass.

Custom printed with a monogram or your company logo, this glass is sure to impress guests, customers, and business associates. 4.375" L x 4.375" W x 2.75" H

Colors: Clear



72	144	288	576	1008	2016
2.63	2.33	2.26	2.19	2.10	1.96

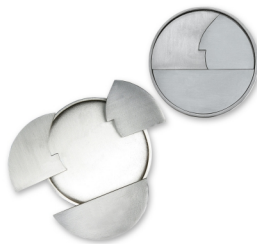
ZP-193

Puzzle Coaster

This unique puzzle coaster is a promotion your customers will notice. Customize it with three or four pieces and your debossed logo. 3.38" L x 3.38" W

Colors: Pewter Gray

50	100	250	500
29.00	28.00	26.99	26.75



9063S2



21 Oz. Trendsetter Stemless Red Wine Glass (Set of 2)

Trendsetter stemless wine glasses match the popularity of stemless! They're casual, non-stuffy, have a lighter base, and you can pop these in the dishwasher. 4.75" H x 3.5" W

Colors: Clear

6	25	100
31.60	30.00	28.50

619S2



16 Oz. Micro-Brew Glass (Set of 2)

Just one sip and you'll understand why these are a crowd favorite! Well suited for lagers and ales, these glasses are an excellent choice for everyday use.

5.75" H x 3" D

Colors: Clear

6	50	100
25.05	23.80	22.60

INDEX

Bottles, Beverages	21
Bottles, Canteens	15, 17
Bottles, Cups	14
Bottles, Tumblers	16, 18, 25
Bottles	11, 13, 20
Coasters, Puzzles	31
Cups	30
Glasses-Drinking	29, 31, 32
Jugs, Tumblers	19, 21
Key Chains / Rings, Openers	19
Kits-Other	29
Mugs, Cups	27
Mugs, Tumblers	26, 27
Mugs	6, 8, 23, 24
Openers, Key Chains / Rings	14
Thermoses, Bottles	15
Tumblers, Beverages	3, 10
Tumblers, Bottles	4
Tumblers, Cups	7
Tumblers, Glasses-Drinking	11
Tumblers, Mugs	8
Tumblers	3, 4, 5, 6, 7 9, 10, 25



Denver

720.364.9299

sandra@kanizzle.com

Midwest

815.307.2743

christine@kanizzle.com

